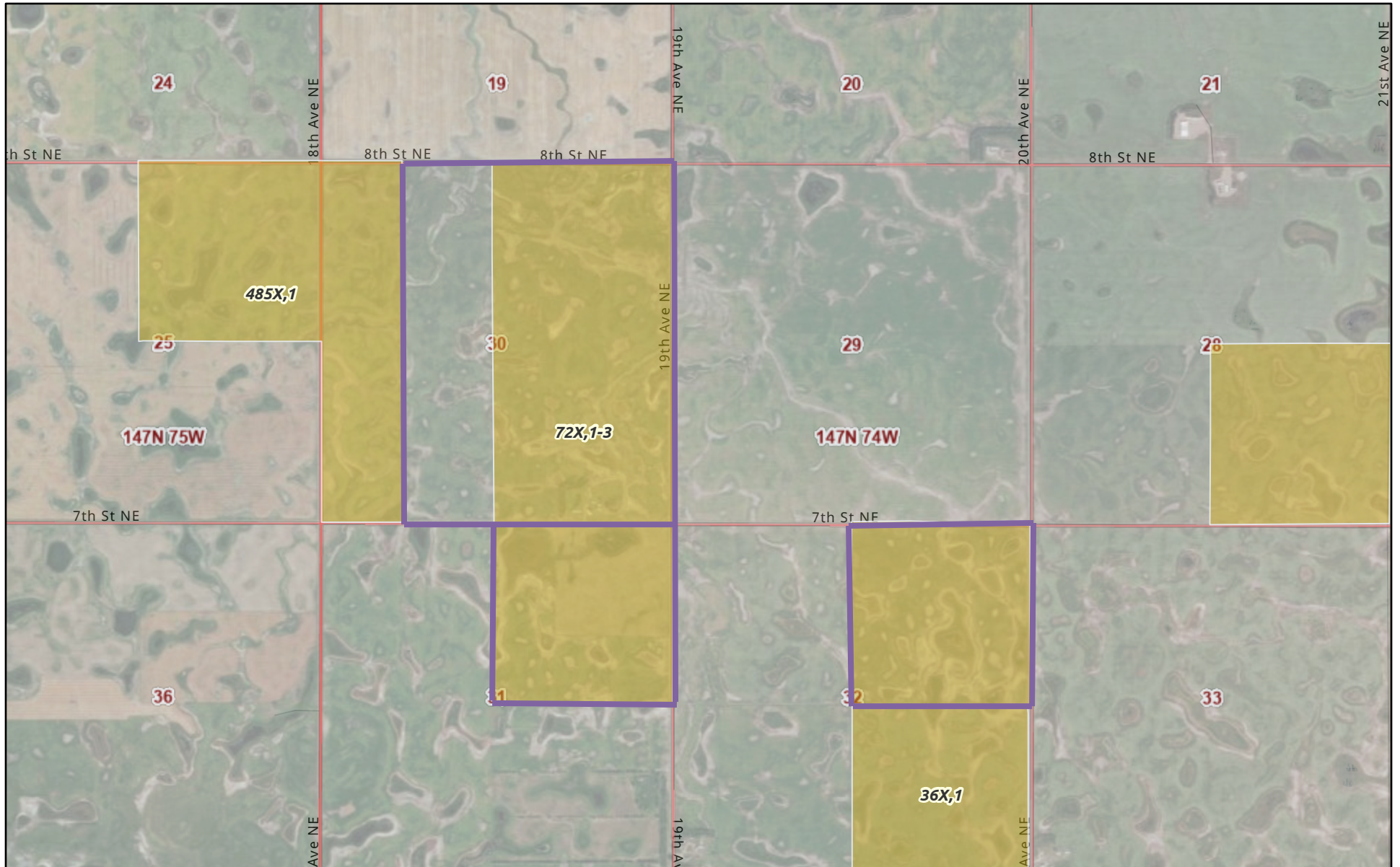
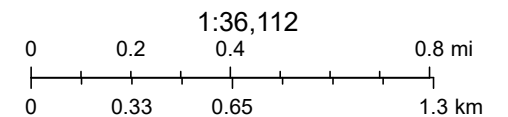


# ArcGIS Web Map



3/5/2024, 1:18:58 PM

- USA Counties
- USA 118th Congressional Districts (All Territories)
- FWS National Realty Approved Acquisition Boundaries
- Limited
- FWS National Realty Tracts Easement
- Interior Regions
- PLSS Township
- PLSS Section



Esri, NASA, NGA, USGS, FEMA, State of North Dakota, Esri, TomTom, Garmin, SafeGraph, GeoTechnologies, Inc, METI/NASA, USGS, EPA, NPS,

ArcGIS Web AppBuilder