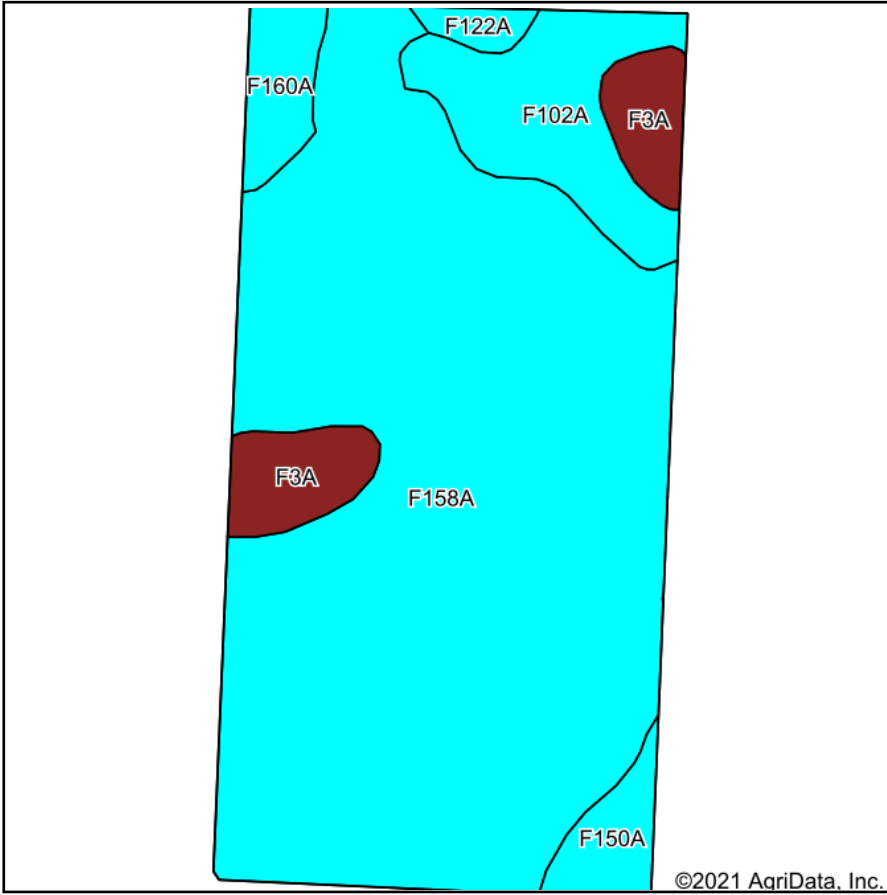
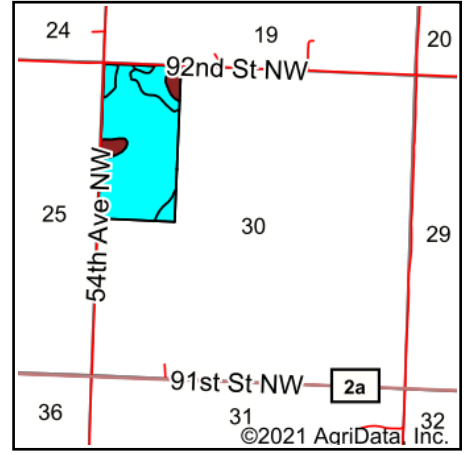


Soils Map



Soils data provided by USDA and NRCS.

©2021 AgriData, Inc.



State: **North Dakota**
 County: **Renville**
 Location: **30-161N-86W**
 Township: **McKinney**
 Acres: **77.61**
 Date: **9/1/2021**



Maps Provided By:



Area Symbol: ND075, Soil Area Version: 23

Code	Soil Description	Acres	Percent of field	Non-Irr Class Legend	Non-Irr Class *c	Productivity Index
F158A	Hamlet-Souris-Tonka complex, 0 to 3 percent slopes	60.47	77.9%		IIc	80
F102A	Hamerly loam, 0 to 3 percent slopes	7.16	9.2%		Ile	83
F3A	Parnell silty clay loam, 0 to 1 percent slopes	4.65	6.0%		Vw	25
F160A	Hamlet-Souris loams, 1 to 3 percent slopes	2.35	3.0%		IIc	85
F150A	Hamlet-Tonka-Wyard complex, 0 to 3 percent slopes	2.17	2.8%		IIc	73
F122A	Svea-Cresbard loams, 0 to 3 percent slopes	0.81	1.0%		IIc	79
Weighted Average						76.9

*c: Using Capabilities Class Dominant Condition Aggregation Method
 Soils data provided by USDA and NRCS.