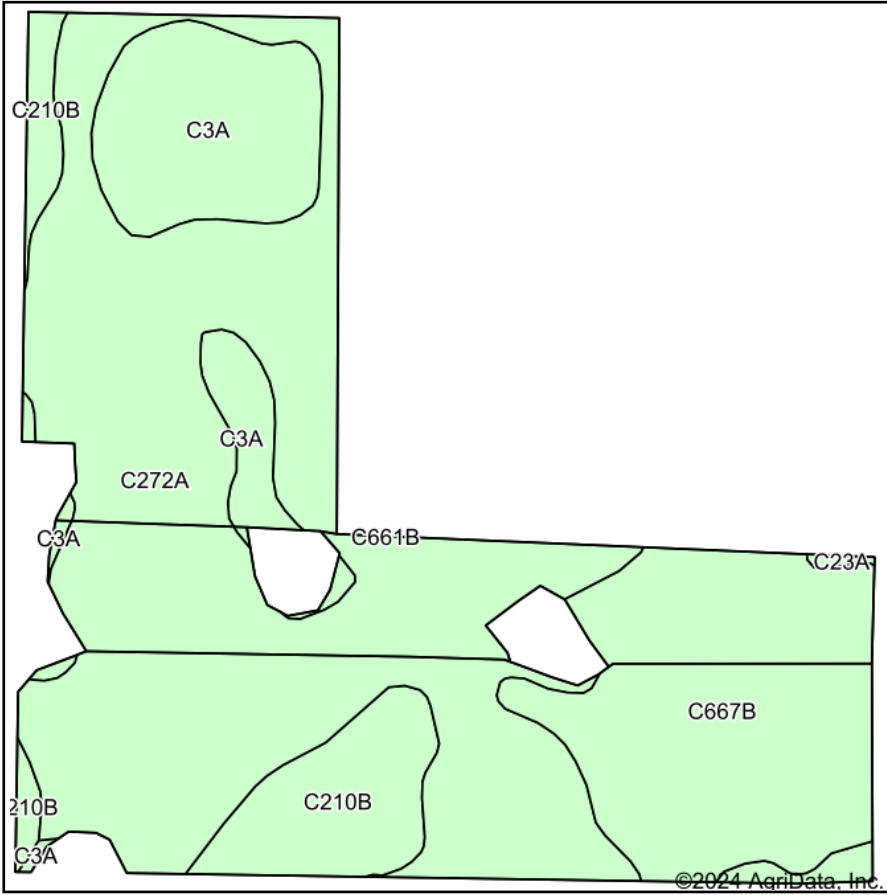
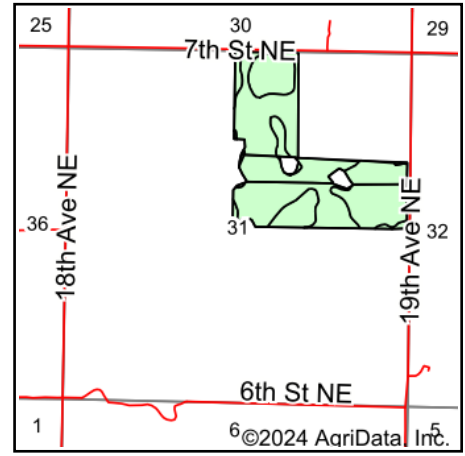


Soils Map



Soils data provided by USDA and NRCS.



State: **North Dakota**
 County: **Sheridan**
 Location: **31-147N-74W**
 Township: **Boone**
 Acres: **90.91**
 Date: **3/5/2024**



Maps Provided By:



Area Symbol: ND083, Soil Area Version: 27

| Code | Soil Description | Acres | Percent of field | Non-Irr Class *c | Productivity Index |
|-------------------------|---|-------|------------------|------------------|--------------------|
| C272A | Hamerly-Tonka complex, 0 to 3 percent slopes | 51.70 | 56.9% | Ile | 62 |
| C667B | Williams-Niobell loams, 3 to 6 percent slopes | 19.51 | 21.5% | Ile | 77 |
| C3A | Parnell silty clay loam, 0 to 1 percent slopes | 11.61 | 12.8% | Vw | 20 |
| C210B | Williams-Bowbells loams, 3 to 6 percent slopes | 7.95 | 8.7% | Ile | 83 |
| C23A | Vallers, moderately saline-Parnell complex, 0 to 1 percent slopes | 0.14 | 0.2% | IVw | 35 |
| Weighted Average | | | | 2.39 | 61.7 |

*c: Using Capabilities Class Dominant Condition Aggregation Method

Soils data provided by USDA and NRCS.